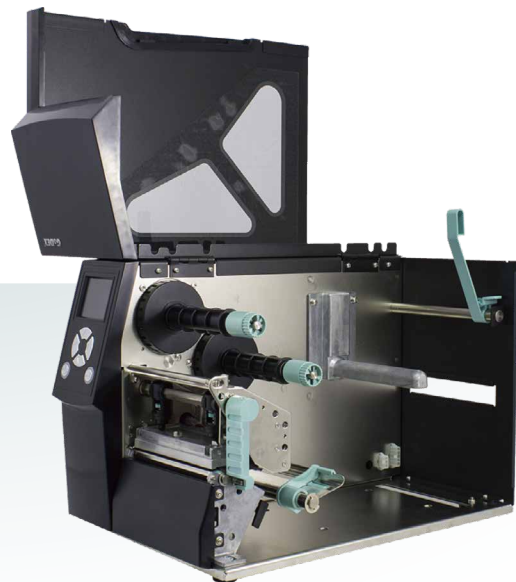




ZX400/400i series

ZX400 series printer, the best combination of Compact and Robust Design

Innovating upon extensive customer feedbacks, GoDEX 's most cost-effective and space-saving Industrial printers, the ZX400/ZX400i series, integrates industrial utility with its high performance and exquisite design. The ZX400/ZX400i series not only remains its classic design, but also provides features with



- Multiple connectivity
- Auto Calibration button included.
- A full line of accessories
- Easy ribbon/ media loading
- full-range adjustable label sensor

- 32-bit CPU that offers fast "first label out" throughput
- Fast print speed - up to 6 ips
- Upgrade version for 2.4" Color TFT LCD and operation panel for easy and intuitive operation.

ZX400/400i series

Thermal Transfer Light Industrial Printer

Model Name	ZX420	ZX420i	ZX430	ZX430i
Print Method	Thermal Transfer / Direct Thermal			
Resolution	203 dpi (8 dots/mm)		300 dpi (12 dot/mm)	
Print Speed	6 ips (152 mm/s)		4 ips (102 mm/s)	
Print Width	4.25" (108mm)		4.16" (105.7mm)	
Print Length	Min. 0.16" (4 mm)**; Max. 157.44" (3999mm)		Min. 0.16" (4 mm)**; Max. 73.19" (1859 mm)	
Processor	32-bit RISC CPU			
Memory	128 MB Flash (60 MB for user storage)			
Flash SDRAM	32 MB			
Sensor Type	Adjustable reflective sensor and transmissive sensor, left aligned			
Type	Continuous form, gap labels, black mark sensing, and punched hole; label length set by auto sensing or programming			
Width	Tear : Min. 1" (25.4 mm) – Max. 4.64" (118 mm) Cutter : Max. 4.61" (117 mm)			
Media Thickness	Dispenser / Rewind : Max. 4.64" (118 mm) Min. 0.003" (0.076 mm) – Max. 0.01" (0.25 mm)			
Label roll diameter	Max. 8" (203.2 mm) with 3" (76.2 mm) core			
Core diameter	Max. 6" (152.4 mm) with 1.5" (38.1 mm) core Max. 5" (127 mm) with 1" (25.4 mm) core Min. 1" (25.4 mm) – Max. 3" (76.2 mm)			
Ribbon Types	Wax, wax/resin, resin			
Ribbon Length	Max. 1476' (450 m)			
Ribbon Width	Min. 1.18" (30 mm) – Max. 4.33" (110 mm)			
Ribbon roll diameter	3" (76.2 mm)			
Ribbon Core diameter	1" (25.4 mm)			
Printer Language	EZPL, GEPL, GZPL auto switch			
Software Label design software	GoLabel (for EZPL only)			
Driver	Windows 2000, XP, Vista, Windows 7, 8.1 and 10, Windows Server 2003 & 2008, MAC, Linux			
DLL	Win CE, .NET, Android, Windows Mobile, Windows 2000 / XP / VISTA / Windows 7 / Windows 8.1			
Resident Fonts Bitmap Fonts	Bitmap fonts 90°, 180°, 270° rotatable, single characters 90°, 180°, 270° rotatable			
TTF Fonts	Bitmap fonts 8 times expandable in horizontal and vertical directions TTF Fonts (Bold / Italic / Underline). 0°, 90°, 180°, 270° rotatable			
Download Fonts Bitmap Fonts	90°, 180°, 270° rotatable, single characters 90°, 180°, 270° rotatable			
Asian Fonts	16x16, 24x24. Traditional Chinese (BIG-5), Simplified Chinese (GB2312), Japanese (S-JIS), Korean (KS-X1001)			
TTF Fonts	90°, 180°, 270° rotatable and 8 times expandable in horizontal and vertical directions TTF Fonts (Bold / Italic / Underline). 0°, 90°, 180°, 270° rotatable			
1-D Bar Codes	China Postal Code, Codabar, Code 11, Code 32, Code 39, Code 93, Code 128 (subset A, B, C), EAN-8, EAN-13, EAN 8/13 (with 2 & 5 digits extension), EAN 128, FIM, German Post Code, GS1 DataBar, HIBC, Industrial 2 of 5, Interleaved 2-of-5 (1 of 5), Interleaved 2-of-5 with Shipping Bearer Bars, ISBT – 128, ITF 14, Japanese Postnet, Logmars, MSI, Postnet, Plessey, Planet 11 & 13 digit, RPS 128, Random Weight, Standard 2 of 5, Telepen, UPC-A, UPC-E, UPC-A and UPC-E with EAN 2 or 5 digit extension, UCC 128, UCC/EAN-128 K-Mart			
2-D Bar Codes	Aztec code, Code 49, Codablock F, Datamatrix code, MaxiCode, Micro PDF417, Micro QR code, PDF417, QR code, TLC 39			
Code Pages	Codepage 437, 737, 850, 851, 852, 855, 857, 860, 861, 862, 863, 865, 866, 869, Windows 1250, 1251, 1252, 1253, 1254, 1255, 1257 Unicode UTF8, UTF16BE, UTF16LE			
Graphics	Resident graphic file types are BMP and PCX, other graphic formats are downloadable from the software			
Interfaces	<ul style="list-style-type: none"> USB 2.0 (B-Type) 	<ul style="list-style-type: none"> USB 2.0 (B-Type) Serial port: RS-232 (DB-9) IEEE 802.3 10/100 Base-Tx Ethernet port (RJ-45) USB Host (A-Type) 	<ul style="list-style-type: none"> USB 2.0 (B-Type) 	<ul style="list-style-type: none"> USB 2.0 (B-Type) Serial port: RS-232 (DB-9) IEEE 802.3 10/100 Base-Tx Ethernet port (RJ-45) USB Host (A-Type)
Control Panel	<ul style="list-style-type: none"> 1 Power on/standby button with green color LED backlight 1 Calibration button at rear panel 1 Control key : FEED / PAUSE / CANCEL with dual color LED backlight: Ready (Green); Error (Red) 	<ul style="list-style-type: none"> Color TFT LCD with navigation button 1 Power on/standby button with green color LED backlight 1 Calibration button at rear panel 1 Control key : FEED / PAUSE / CANCEL with dual color LED backlight: Ready (Green); Error (Red) 	<ul style="list-style-type: none"> 1 Power on/standby button with green color LED backlight 1 Calibration button at rear panel 1 Control key : FEED / PAUSE / CANCEL with dual color LED backlight: Ready (Green); Error (Red) 	<ul style="list-style-type: none"> Color TFT LCD with navigation button 1 Power on/standby button with green color LED backlight 1 Calibration button at rear panel 1 Control key : FEED / PAUSE / CANCEL with dual color LED backlight: Ready (Green); Error (Red)
RTC	Standard			
Power	Auto Switching 100-240V AC, 50-60Hz			
Environment Operation temperature	41°F to 104°F (5°C to 40°C)			
Storage temperature	-4°F to 140°F (-20°C to 60°C)			
Humidity Operation	20-85%, non-condensing			
Storage	10-90%, non-condensing			
Agency Approvals	CE (EMC) · FCC Class B · CB · UL · cUL · CCC			
Dimension Length	15.86" (403 mm)			
Height	10.79" (274 mm)			
Width	10.24" (260 mm)			
Weight	23.81lbs (10.8 Kg), excluding consumables Cutter (Dealer Install) Parallel port adaptor module (Centronic female 36-pin)(Dealer Install) Bluetooth (Dealer Installer)			
Options	Wireless LAN (IEEE 802.11 b/g/n) (Dealer Install) External label rewinder Label Dispenser (Dealer Install)			

* Specifications are subject to change without notice. All company and/or product names are trademarks and/or registered trademarks of their respective owners.

** Minimum print height and maximum print speed specification compliance can be dependent on non-standard material variables such as label type, thickness, spacing, liner construction, etc. GoDEX is pleased to test non-standard materials for minimum print height, and maximum print speed capability.

Applications

Applications for Labels & Barcodes

ZX400/400i series is as versatile as for most applications.



Retail

Receipt, Ingredient label, Price tag, Content label, Registration receipt, Postal slip, etc.

Warehouses, Logistic & Transportation

Stack label, Product label, Postal slip
Storage management, Dispatch label, Packaging label, Delivery receipt, etc.

Manufacturing

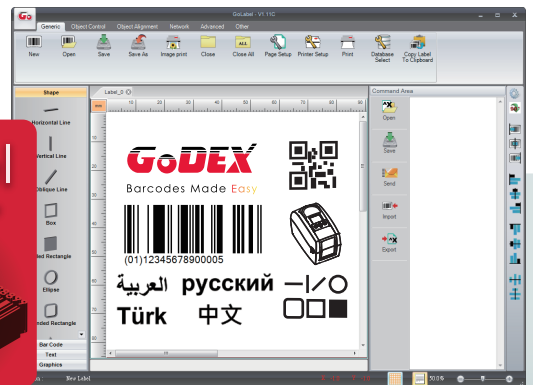
Product label, Content label, Packaging label, Administrative slip, In & Out record slip, etc.

GoDEX LABEL DESIGN SOFTWARE

GoLabel Software / User Friendly

GoLabel is based on a WYSIWYG (what you see is what you get) user interface, makes everything so easy for you to create and print barcode labels. GoLabel is the first-choice label design software that you can't miss it!

Go visit www.godexintl.com and download GoLabel to experience it!



GoDEX RIBBONS

High quality GoDEX thermal transfer ribbons.

GoDEX offers premium thermal transfer ribbons that will fit most of your printing applications.

- Wax
- Wax/ Resin
- Resin
- Near Edge

