



Zebra Technologies Corporation
Lincolnshire, IL U.S.A.
www.zebra.com

©2018 ZIH Corp. and/or its affiliates. All rights reserved. Zebra and the stylized Zebra head are trademarks of ZIH Corp., registered in many jurisdictions worldwide. All other trademarks are the property of their respective owners.



212393-001

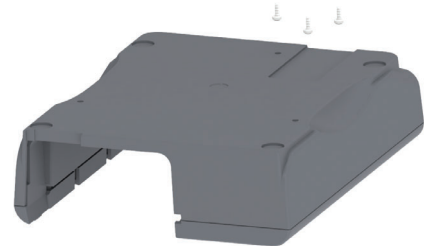


PAP
Printed in China



ZD Series

Direct Thermal Attached Battery Base Option



Battery Pack (P1091701) — Not Included



www.zebra.com/zd420d-info

