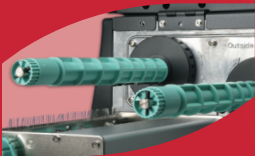


EZ Industrial Printer

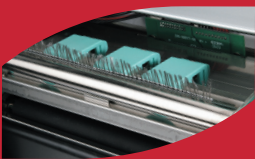
EZ Features



Upgraded Graphic LCD



Ribbon supply and
rewind module



Modular concept
printhead



Adjustable sensor kit



EZ6000

Plus series



ISO 9001:2008 CERTIFIED

GoDEX

EZ6000 Plus series Product Specifications

Model	EZ6200 Plus	EZ6300 Plus
Print Method	Thermal Transfer / Direct Thermal	
Resolution	203 dpi (8 dots/mm)	300 dpi (12 dots/mm)
Print Speed	6 IPS (150 mm/s)	4 IPS (102 mm/s)
Print Width	6.61" (168 mm)	
Print Length	Min. 0.16" (4 mm)** ; Max. 118" (3000 mm)	Min. 0.16" (4 mm)** ; Max. 54" (1371 mm)
Memory	4MB Flash (2MB for user storage) ; 16MB SDRAM	
Sensor Type	Adjustable reflective sensor and transmissive sensor, left aligned.	
Media	Types: Continuous form, gap labels, black mark sensing, and punched hole; label length set by auto sensing or programming. Width (Tear): 2" (50.8 mm) Min. - 7" (178 mm) Max. Width (Cutter): 6.5" (165 mm) Max. Width (Heavy Duty Cutter): 6.8" (172 mm) Max. Width (Stripper / Rewind): 7" (178 mm) Max. Thickness: 0.003" (0.06 mm) Min. - 0.01" (0.25 mm) Max. Label roll diameter: Max. 8" (203.2 mm) with 3" (76.2 mm) core / Max. 6" (152.4 mm) with 1.5" (38.1 mm) core Core diameter: 1.5" (38.1 mm) - 3" (76.2 mm)	
Ribbon	Types: Wax, wax/resin, resin Length: 1471' (450 m) Width: 2.36" Min. - 6.85" (60 mm - 174 mm) Max. Ribbon roll diameter.: 2.99" (76 mm) Core diameter: 1" (25.4 mm) Auto ink inside and ink outside	
Printer Language	EZPL, GEPL (Godex Eltron® Printer Language), GZPL (Godex Zebra® Printer Language)	
Software	Label design software: QLabel-IV (for EZPL only) Driver: Windows 2000, XP, Vista, 7, Server 2003 and 2008 / DLL: Windows 2000, XP and Vista	
Resident Fonts	Bitmap fonts: 6, 8, 10, 12, 14, 18, 24, 30, 16X26 and OCR A & B Bitmap fonts 90°, 180°, 270° rotatable, single characters 90°, 180°, 270° rotatable Bitmap fonts 8 times expandable in horizontal and vertical directions Scalable fonts 90°, 180°, 270° rotatable	
Download Fonts	Bitmap fonts 90°, 180°, 270° rotatable, single characters 90°, 180°, 270° rotatable Asian fonts 90°, 180°, 270° rotatable and 8 times expandable in horizontal and vertical directions Scalable fonts 90°, 180°, 270° rotatable	
Barcodes	1-D Bar codes: Code 39, Code 93, Code 128 (subset A, B, C), UCC/EAN-128 K-Mart, UCC/EAN-128, UPC A / E (add on 2 & 5), I 2 of 5, I 2 of 5 with Shipping Bearer Bars, EAN 8 / 13 (add on 2 & 5), Codabar, Post NET, EAN 128, DUN 14, HIBC, MSI (1 Mod 10), Random Weight, Telepen, FIM, China Postal Code, RPS 128 and GS1 DataBar 2-D Bar codes: PDF417, Datamatrix code, MaxiCode, QR code and Micro QR code	
Code Pages	CODEPAGE 437, 850, 851, 852, 855, 857, 860, 861, 862, 863, 865, 866, 869, 737 WINDOWS 1250, 1251, 1252, 1253, 1254, 1255 Unicode (UTF8, UTF16)	
Graphics	Resident graphic file types are BMP and PCX, other graphic formats are downloadable from the software	
Interfaces	Serial port: RS-232 (DB-9) USB port (default on) CF Card socket Ethernet 10/100Mbps print server (default off; disables USB when in use)	
Control Panel	Backlit graphics LCD display: 128 x 64 dots or 4 lines x 16 characters Three mono-color status-LEDs: Power on, Ribbon out, Media out Control keys: FEED, PAUSE and CANCEL	
Real Time Clock	Standard	
Power	Auto Switching 100-240VAC, 50-60Hz	
Environment	Operation temperature: 41°F to 104°F (5°C to 40°C) Storage temperature: -4°F to 122°F (-20°C to 50°C)	
Humidity	Operation: 30-85%, non-condensing. Storage: 10-90%, non-condensing.	
Agency Approvals	CE(EMC), FCC Class A, CB, cUL, CCC	
Dimension	Length: 20.31" (516 mm) Height: 11.22" (285 mm) Width: 13.58" (345 mm)	
Weight	36.8 lbs (16.7Kg) ,excluding consumables	
Options	Cutter Module Internal Rewinder with Label Dispenser Parallel port (Centronics 36-pin) and PS2 port Applicator Interface (1 input, 3 outputs, power 500mA @ 5V) 802.11 b/g wireless print server (Default off; disables USB when in use. Must remove Ethernet card to install) External label roll holder for 10" (250 mm) OD label rolls External label rewinder	

*Specifications are subject to change without notice. All company and/or product names are trademarks and/or registered trademarks of their respective owners.

** Minimum print height specification compliance can be dependent on non-standard material variables such as label type, thickness, spacing, liner construction, etc. Godex is pleased to test non-standard materials for minimum height printing capability.

Godex International
infoGT@godexintl.com
+886-2-2225-8580

Godex China
infoGC@godexintl.com
+86-21-5665-1313

Godex Europe
infoGE@godexintl.com
+49-2193-53396-0

Godex Americas
infoGA@godexintl.com
+1-805-987-5100