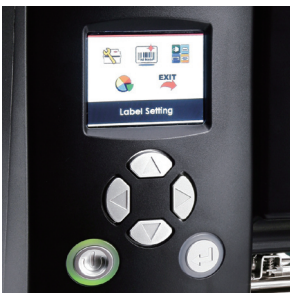




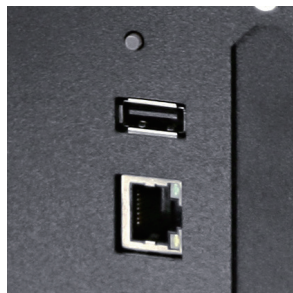
# EZ2250i / EZ2350i

Enhanced mid-range industrial barcode printer for most applications

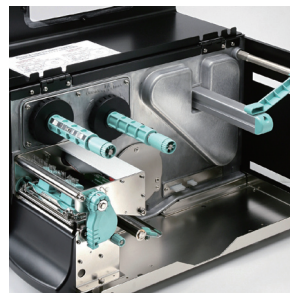
All metal mechanism design featuring die-cast center plane and base make EZ2250i series perfect for high volume applications.



Color TFT LCD and operation panel for easy and intuitive operation



USB Host for extension memory and standalone operation



All metal, industrial enclosure and print mechanism



Automatic self adjustment for coated inside/outside ribbons

Barcodes Made Easy

Model		EZ2250i	EZ2350i
<b>Print Method</b>		Thermal Transfer/Direct Thermal	
<b>Resolution</b>		203 dpi (8 dot/mm)	300 dpi (12 dots/mm)
<b>Print Speed</b>		7 IPS (177 mm/s)	5 IPS (127 mm/s)
<b>Print Width</b>		4.09" (104 mm)	
<b>Print Length</b>		Min. 0.16" (4 mm)**; Max. 100" (2540 mm)	Min. 0.16" (4 mm)**; Max. 45" (1143 mm)
<b>Memory</b>	<b>Flash</b>	8 MB Flash (4 MB for user storage)	
	<b>SDRAM</b>	16 MB	
<b>Sensor Type</b>		Adjustable reflective sensor and transmissive sensor, left aligned	
<b>Media</b>	<b>Types</b>	Continuous form, gap labels, black mark sensing and punched hole; label length set by auto sensing or programming	
	<b>Width</b>	Standard: 1" (25.4 mm) Min.- 4.64" (118 mm) Max. With Cutter: 4.61" (117 mm) Max. With Dispenser/Rewinder: 4.64" (118 mm) Max.	
	<b>Thickness</b>	0.003" (0.06 mm) Min. - 0.01" (0.25 mm) Max.	
	<b>Label Roll Diameter</b>	Max. 8" (203.2 mm) with 3" (76.2 mm) core / Max. 6" (152.4 mm) with 1.5" (38.1 mm) core	
<b>Ribbon</b>	<b>Core Diameter</b>	1.5" (38.1 mm)- 3" (76.2 mm)	
	<b>Types</b>	Wax, wax/resin, resin	
	<b>Length</b>	1471' (450 m)	
	<b>Width</b>	1.18" Min. - 4.33" (30 mm – 110 mm) Max.	
<b>Printer Language</b>	<b>Ribbon Roll Diameter</b>	2.99" (76 mm)	
	<b>Core Diameter</b>	1" (25.4 mm)	
<b>Printer Language</b>		EZPL, GEPL, GZPL auto switch	
<b>Software</b>	<b>Label Design Software</b>	GoLabel (for EZPL only)	
	<b>Driver</b>	Windows 2000, XP, Vista, 7, Windows Server 2003 & 2008	
	<b>DLL</b>	Windows 2000, XP and Vista	
<b>Resident Fonts</b>	<b>Bitmap Fonts</b>	6, 8, 10, 12, 14, 18, 24, 30, 16X26 and OCR A&B Bitmap fonts 90°, 180°, 270° rotatable, single characters 90°, 180°, 270° rotatable Bitmap fonts 8 times expandable in horizontal and vertical directions	
	<b>Scalable Fonts</b>	90°, 180°, 270° rotatable	
<b>Download Fonts</b>	<b>Bitmap Fonts</b>	90°, 180°, 270° rotatable, single characters 90°, 180°, 270° rotatable	
	<b>Asian Fonts</b>	90°, 180°, 270° rotatable and 8 times expandable in horizontal and vertical directions	
	<b>Scalable Fonts</b>	90°, 180°, 270° rotatable	
<b>Barcodes</b>	<b>1-D Bar Codes</b>	Code 39, Code 93, EAN 8/13 (add on 2&5), UPC A/E (add on 2&5), I 2 of 5 & I 2 of 5 with Shipping Bearer Bars, Codabar, Code 128 (subset A, B, C), EAN 128, RPS 128, UCC 128, UCC/EAN-128 K-Mart, Random Weight, Post NET, ITF 14, China Postal Code, HIBC, MSI, Plessey, Telepen, FIM, GS1 DataBar	
	<b>2-D Bar Codes</b>	PDF417, Datamatrix code, MaxiCode, QR code, Micro PDF417, Micro QR code, Aztec code	
<b>Code Pages</b>		Codepage 437, 850, 851, 852, 855, 857, 860, 861, 862, 863, 865, 866, 869, 737 Windows 1250, 1251, 1252, 1253, 1254, 1255, 1257 Unicode(UTF8, UTF16)	
<b>Graphics</b>		Resident graphic file types are BMP and PCX, other graphic formats are downloadable from the software	
<b>Interfaces</b>	Serial port: RS-232 (DB-9)		
	USB 2.0		
	Ethernet 10/100 Mbps print server USB Host		
<b>Control Panel</b>		Color TFT LCD with navigation button Power on/off button Calibration button	
<b>Power</b>		Auto Switching 100-240VAC, 50-60Hz	
<b>Real Time Clock</b>		Standard	
<b>Environment</b>	<b>Operation Temperature</b>	41°F to 104°F (5°C to 40°C)	
	<b>Storage Temperature</b>	-4°F to 122°F (-20°C to 50°C)	
<b>Humidity</b>	<b>Operation</b>	30-85%, non-condensing	
	<b>Storage</b>	10-90%, non-condensing	
<b>Agency Approvals</b>		CE(EMC), FCC Class A, CB, cUL, CCC	
<b>Dimension</b>	<b>Length</b>	20.15" (512 mm)	
	<b>Height</b>	11.45" (291 mm)	
	<b>Width</b>	10.78" (274 mm)	
<b>Weight</b>		33 lbs (15 Kg), excluding consumables	
<b>Options&amp;Accessories</b>		Cutter Module Label Dispenser + Internal Rewinder Parallel port adapter module (Centronic female 36-pin) Applicator Interface (1 input, 3 outputs, power 500mA @ 5V, for project base) External label roll holder for 10" (250 mm) O.D. label rolls External label rewinder	

\* Specifications are subject to change without notice. All company and/or product names are trademarks and/or registered trademarks of their respective owners.

\*\* Minimum print height specification compliance can be dependent on non-standard material variables such as label type, thickness, spacing, liner construction, etc. Godex is pleased to test non-standard materials for minimum height printing capability.