

Genuine Zebra® Supplies

High-quality, Reliable Media and Ribbon Solutions



**Genuine Zebra
printer supplies
leave a superior
impression.**

Zebra labels, tags, and ribbons are specifically engineered for Zebra printers. And just like our printers, Zebra supplies are made to a higher standard. Genuine Zebra Supplies minimise wear and tear on your printhead, reducing overall maintenance costs.

**Wide selection
of solutions**

Zebra carries more than 1,000 combinations of high-quality, reliable labels, tags and ribbons – more than 250 of which are UL-recognised and CSA-accepted.

This means that whatever the application, we can provide an in-stock or custom-made solution for you.



Reliability on demand™



Zebra's stocked supplies are convenient and economical

You can buy Zebra's stocked supplies products in handy quantities, so you are not forced to take more than you need, and they are quick and easy to order.

Labels, tags and receipts

Zebra holds around 200 different label products stocked and ready to ship at any time. These include a huge choice of paper labels, tags, and receipt rolls, suitable for all Zebra printers. We also carry a selection of stocked synthetic labels for applications needing greater durability.

Ribbons

More than 150 ribbon types and sizes are stocked; these are fully tested and approved for use with our label materials. Make sure you specify Zebra ribbons with your Zebra labels for the best-quality printing solution. Zebra's network of experienced and knowledgeable distributors spans the globe. There is one near you who can advise you on the best label and ribbon combination for your application.

Our stringent packaging specifications ensure that your Zebra supplies will arrive in perfect condition. And, of course, with Genuine Zebra Supplies, you know that they have been tested extensively to ensure complete compatibility with your Zebra printer.



Use genuine Zebra stocked labels and ribbons to get the maximum print quality from your Zebra printer



Specialists in developing unique labelling solutions

Zebra's experts have been solving difficult labelling problems for years. With our knowledge of adhesives, synthetics, and thermal printing, we have been able to provide our clients with unique solutions that meet the most challenging conditions.

Adhesives

High-strength

We can offer labels with adhesives that will stick on hard-to-adhere surfaces like bricks, concrete, rough timber, or cloth. Not only that, but they can even stick on damp, cold, or greasy materials. For example, we supply labels for demanding applications in the automotive and electronics sectors, such as for use on low-energy plastics and painted components, with excellent resistance to chemicals and high temperatures.

Ultra-removable adhesive

When you need a label that can be removed cleanly, such as on high-quality retail items (whether on the product itself or its packaging), Zebra has a label to suit. Our ultra-removable adhesives will allow the label to be peeled off most surfaces without leaving behind sticky residue. We also supply synthetic labels with ultra-removable adhesives for applications in the electronics and manufacturing sectors.

Durable solutions

As well as a good adhesive, an efficient, durable label needs good-quality paper or synthetic material. Zebra probably offers more durable solutions than any of its competitors. For example, our labels are used on printed circuit boards and electronic components, electrical products, white and brown goods, automotive parts, and in heavy engineering applications.

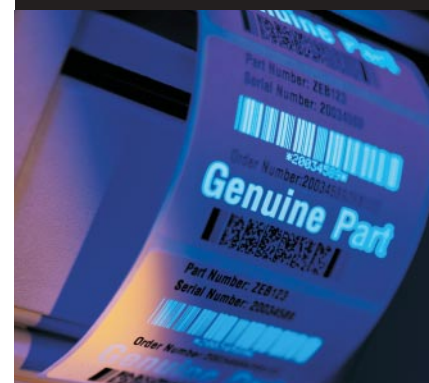
If you cannot find the solution you need, or want to improve your current labelling solution, let us help you.

Security solutions

Counterfeiting and piracy of branded products cost brand owners worldwide more than 600 million euros each year. Zebra offers a range of security and tamper-evident solutions, which can help protect your brand's image and value by preventing fraud as your product moves through the supply chain.

Basic security solutions include tamper-evident adhesives, destructible films, and special die-cuts. For companies that require higher levels of security, Zebra has more advanced solutions, which use unique ribbon formulae, special inks, and specialist films.

Most of the security labelling solutions from Zebra can easily be added to your current operations, so you can enhance your current security measures with an additional layer of protection.



We can supply you with a label offering maximum resistance against:

- abrasion
- tearing
- heat
- cold
- chemicals and solvents
- water
- grease and oil





Genuine Zebra Supplies for genuine Zebra printers – follow your instincts

Optimum print quality

It goes without saying that Zebra prides itself on the print performance of its label materials. Because Zebra only makes labels for Zebra printers, its entire label manufacturing operation is focussed on providing the best print performance for its printer customers. Zebra supplies the best-quality label facestocks and ribbon products from around the world.

Where scanning reliability and 100% consistent print quality are specified, you can choose from several paper and synthetic materials that are unsurpassed for small font and bar code print quality.

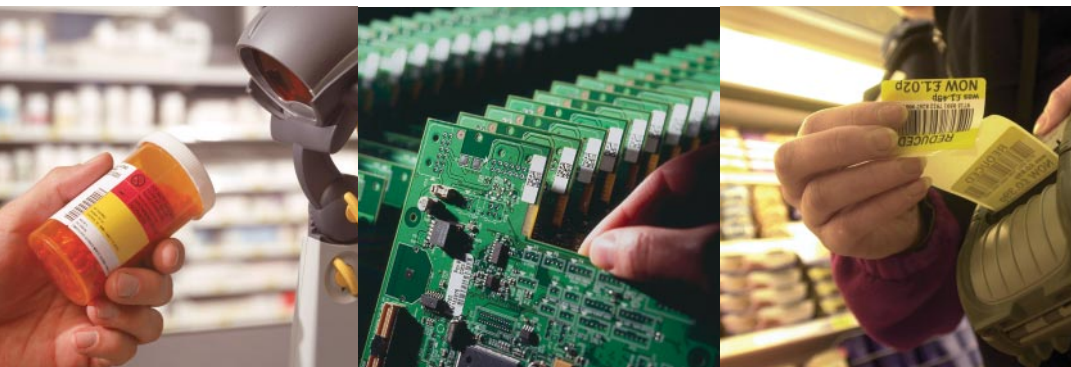
Where pre-printed coloured labels are required, it's important to know that the inks will not adversely affect the quality of the thermal printing or, indeed, the performance of the printers. Zebra offers pre-printed labels in up to six colours, using tested and approved inks. With our extensive approval process, you can be sure that our pre-printed labels will enable maximum performance from your Zebra printer.

Why run with anything else?

Zebra Technologies is the world's leading manufacturer of bar code label printing systems, providing printers and supplies to businesses and governments in nearly 100 countries around the world.

If you run a Zebra printer, and if quality, reliability, range, and availability are critical to your performance, **Zebra labels and ribbons have to be the natural choice.**

Reliability on demand is a trademark, and Zebra and the Zebra logo are registered trademarks of Zebra Technologies Europe Limited. All rights reserved. All other trademarks are the property of their respective owners.



For further information on these products, please email supplieurope@zebra.com



Zebra Technologies

European Headquarters
Zebra House, The Valley Centre
Gordon Road, High Wycombe
Buckinghamshire HP13 6EQ
United Kingdom
T: +44 (0)1494 472872
F: +44 (0)1494 450103

Label Manufacturing Centre
Pittman Way, Fulwood
Preston PR2 9ZD
United Kingdom
T: +44 (0) 1772 797555
F: +44 (0) 1772 693000

Regional Sales Office
Mollsfeld 1
D-40670 Meerbusch
Germany
T: +49 (0) 2159 6768 0
F: +49 (0) 2159 6768 22

Regional Sales Office
50 rue Marcel Dassault
F-92100 Boulogne-Billancourt
France
T: +33 (0)1 55 20 93 93
F: +33 (0)1 55 20 93 99

International Headquarters
333 Corporate Woods Parkway
Vernon Hills, IL 60061-3109
USA
T: +1 847 793 2600
F: +1 847 913 8766

Other Locations

United States: California, Florida, Rhode Island,

Wisconsin

Europe: Denmark, Italy, Spain

Asia-Pacific: Australia, China, Japan, Singapore,

South Korea

Middle East: Dubai

www.zebra.com



© 2004 Zebra Technologies Europe Limited

FS-30902
An ISO 9000 registered company

Printed in the UK
#12541L (02/04)