



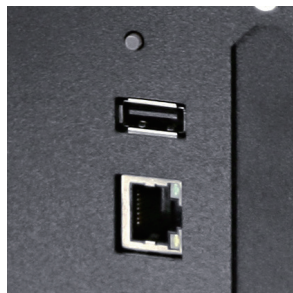
EZ2250i / EZ2350i

Enhanced mid-range industrial barcode printer for most applications

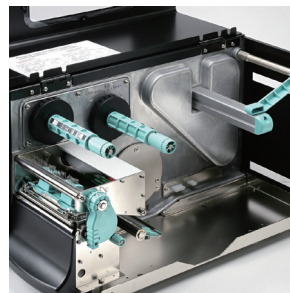
All metal mechanism design featuring die-cast center plane and base make EZ2250i series perfect for high volume applications.



Color TFT LCD and operation panel for easy and intuitive operation



USB Host for extension memory and standalone operation



All metal, industrial enclosure and print mechanism



Automatic self adjustment for coated inside/outside ribbons

Barcodes Made Easy

Model		EZ2250i	EZ2350i
	Print Method	Thermal Transfer / Direct Thermal	
	Resolution	203 dpi (8 dot/mm)	300 dpi (12 dots/mm)
	Print Speed	7 IPS (177 mm/s)	5 IPS (127 mm/s)
	Print Width	4.09" (104 mm)	
	Print Length	Min. 0.16" (4 mm)**; Max. 100" (2540 mm)	
	Processor	32 bit RISC CPU	
Memory	Flash	8 MB Flash (4 MB for user storage)	
	SDRAM	16 MB	
	Sensor Type	Adjustable reflective sensor and transmissive sensor, left aligned	
	Types	Continuous form, gap labels, black mark sensing and punched hole; label length set by auto sensing or programming	
Media	Width	Standard: Min. 1" (25.4 mm) – Max. 4.64" (118 mm) With Cutter: Max. 4.61" (117 mm) With Dispenser / Rewinder: Max. 4.64" (118 mm)	
	Thickness	Min. 0.003" (0.06 mm) – Max. 0.01" (0.25 mm)	
	Label Roll Diameter	Max. 8" (203.2 mm) with 3" (76.2 mm) core Max. 6" (152.4 mm) with 1.5" (38.1 mm) core	
	Core Diameter	1.5" (38.1 mm) - 3" (76.2 mm)	
Ribbon	Types	Wax, wax / resin, resin	
	Length	1471' (450 m)	
	Width	Min. 1.18" (30 mm) – Max. 4.33" (110 mm)	
	Ribbon Roll Diameter	2.99" (76 mm)	
	Core Diameter	1" (25.4 mm)	
	Printer Language	EZPL, GEPL, GZPL; auto switch	
Software	Label Design Software	GoLabel (for EZPL only)	
	Driver	Windows 2000, XP, Vista, 7 and Windows Server 2003 & 2008	
	DLL	Windows 2000, XP and Vista	
Resident Fonts	Bitmap Fonts	6, 8, 10, 12, 14, 18, 24, 30, 16X26 and OCR A&B Bitmap fonts 90°, 180°, 270° rotatable, single characters 90°, 180°, 270° rotatable Bitmap fonts 8 times expandable in horizontal and vertical directions	
	Scalable Fonts	90°, 180°, 270° rotatable	
Download Fonts	Bitmap Fonts	90°, 180°, 270° rotatable, single characters 90°, 180°, 270° rotatable	
	Asian Fonts	90°, 180°, 270° rotatable and 8 times expandable in horizontal and vertical directions	
	Scalable Fonts	90°, 180°, 270° rotatable	
Barcodes	1-D Bar Codes	Code 39, Code 93, EAN 8 / 13 (add on 2&5), UPC A / E (add on 2&5), I 2 of 5 & I 2 of 5 with Shipping Bearer Bars, Codabar, Code 128 (subset A, B, C), EAN 128, RPS 128, UCC 128, UCC / EAN-128 K-Mart, Random Weight, Post NET, ITF 14, China Postal Code, HIBC, MSI, Plessey, Telepen, FIM and GS1 DataBar	
	2-D Bar Codes	PDF417, Datamatrix code, MaxiCode, QR code, Micro PDF417, Micro QR code and Aztec code	
	Code Pages	Codepage 437, 850, 851, 852, 855, 857, 860, 861, 862, 863, 865, 866, 869 and 737 Windows 1250, 1251, 1252, 1253, 1254, 1255 and 1257 Unicode(UTF8, UTF16)	
	Graphics	Resident graphic file types are BMP and PCX, other graphic formats are downloadable from the software	
	Interfaces	USB 2.0 Serial port: RS-232 (DB-9) Ethernet 10/100 Mbps USB Host	
	Control Panel	Color TFT LCD with navigation button Calibration button Control key: FEED Power on / off button	
	Power	Auto Switching 100-240V AC, 50-60Hz	
	Real Time Clock	Standard	
Environment	Operation Temperature	41°F to 104°F (5°C to 40°C)	
	Storage Temperature	-4°F to 122°F (-20°C to 50°C)	
Humidity	Operation	30-85%, non-condensing	
	Storage	10-90%, non-condensing	
	Agency Approvals	CE(EMC), FCC Class A, CB, cUL, CCC	
Dimension	Length	20.15" (512 mm)	
	Height	11.45" (291 mm)	
	Width	10.78" (274 mm)	
	Weight	33 lbs (15 Kg), excluding consumables	
	Options & Accessories	Cutter Module Label Dispenser + Internal Rewinder Parallel port adapter module (Centronic female 36-pin) Applicator Interface (1 input, 3 outputs, power 500mA @ 5V, for project base) External label roll holder for 10" (250 mm) O.D. label rolls External label rewinder	

* Specifications are subject to change without notice. All company and/or product names are trademarks and/or registered trademarks of their respective owners.

** Minimum print height and maximum print speed specification compliance can be dependent on non-standard material variables such as label type, thickness, spacing, liner construction, etc. Godex is pleased to test non-standard materials for minimum print height and maximum print speed capability.