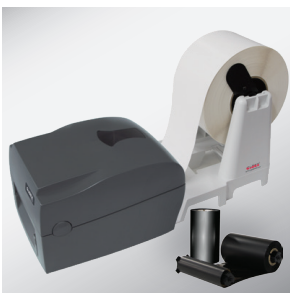




G500 / G530

High-Tech Power with a Customer Friendly Price

"Twin-Sensor Technology" makes the G500 perfect for printing on all types of specialty materials especially for retail and industrial applications



300 meter ribbon plus the optional label stand provides maximum printing volume



"Twin-Sensor" technology allows you to use a broad range of labels



Available interface combinations include:

- USB2.0, Serial and Ethernet
- USB2.0 and Parallel



Strong and stable mechanism design for long term reliability

Barcodes Made Easy

Model	G500		G530	
Print Method	Thermal Transfer/Direct Thermal			
Resolution	203 dpi (8 dot/mm)		300 dpi (12 dots/mm)	
Print Speed	5 IPS (127 mm/s)		4 IPS (102 mm/s)	
Print Width	4.25" (108 mm)		4.16" (105.7 mm)	
Print Length	Min. 0.16" (4 mm)**; Max. 68" (1727 mm)		Min. 0.16" (4 mm)**; Max. 30" (762 mm)	
Processor	32 bit RISC CPU			
Memory	Flash	8 MB Flash (4 MB for user storage)		
	SDRAM	16 MB		
Sensor Type	Adjustable reflective sensor 2 fixed transmissive sensors, central aligned			
Media	Types	Continuous form, gap labels, black mark sensing, and punched hole; label length set by auto sensing or programming		
	Width	1" (25.4 mm) Min. - 4.64" (118 mm) Max.		
	Thickness	0.003" (0.06 mm) Min. - 0.01" (0.25 mm) Max.		
	Label Roll Diameter	Max. 5" (127 mm)		
	Core Diameter	1" (25.4 mm), 1.5" (38.1 mm), 3" (76.2 mm)		
Ribbon	Types	Wax, wax / resin, resin		
	Length	981' (300 m)		
	Width	Min. 1.18" (30 mm) – Max. 4.33" (110 mm)		
	Ribbon Roll Diameter	2.67" (68 mm)		
	Core Diameter	1" (25.4 mm)		
Printer Language	EZPL, GEPL, GZPL auto switch			
Software	Label Design Software	GoLabel (for EZPL only)		
	Driver	Windows 2000, XP, Vista, 7 and Windows Server 2003 & 2008		
	DLL	Windows 2000, XP and Vista		
Resident Fonts	Bitmap Fonts	6, 8, 10, 12, 14, 18, 24, 30, 16x26 and OCR A&B Bitmap fonts 90°, 180°, 270° rotatable, single characters 90°, 180°, 270° rotatable Bitmap fonts 8 times expandable in horizontal and vertical directions		
	Scalable Fonts	90°, 180°, 270° rotatable		
Download Fonts	Bitmap Fonts	90°, 180°, 270° rotatable, single characters 90°, 180°, 270° rotatable		
	Asian Fonts	90°, 180°, 270° rotatable and 8 times expandable in horizontal and vertical directions		
Barcodes	1-D Bar Codes	Code 39, Code 93, EAN 8 /13 (add on 2 & 5), UPC A / E (add on 2 & 5), I 2 of 5 & I 2 of 5 with Shipping Bearer Bars, Codabar, Code 128 (subset A, B, C), EAN 128, RPS 128, UCC 128, UCC / EAN-128 K-Mart, Random Weight, Post NET, ITF 14, China Postal Code, HIBC, MSI, Plessey, Telepen, FIM and GS1 DataBar		
	2-D Bar Codes	PDF417, Datamatrix code, MaxiCode, QR code, Micro PDF417, Micro QR code and Aztec code		
Code Pages	Codepage 437, 850, 851, 852, 855, 857, 860, 861, 862, 863, 865, 866, 869, 737 Windows 1250, 1251, 1252, 1253, 1254, 1255, 1257 Unicode (UTF8, UTF16)			
Graphics	Resident graphic file types are BMP and PCX, other graphic formats are downloadable from the software			
Interfaces	USB 2.0	USB 2.0	USB 2.0	USB 2.0
	Parallel port	Serial port Ethernet	Parallel port	Serial port Ethernet
Control Panel	Two bi-color status-LEDs: Ready, Status Control key: FEED			
Power	Auto Switching 100-240VAC, 50-60Hz			
Environment	Operation Temperature	41°F to 104°F (5°C to 40°C)		
	Storage Temperature	-4°F to 122°F (-20°C to 50°C)		
Humidity	Operation	30-85%, non-condensing		
	Storage	10-90%, non-condensing		
Agency Approvals	CE (EMC), FCC Class A, CB, CCC			
Dimension	Length	11.2" (285 mm)		
	Height	6.8" (171 mm)		
	Width	8.9" (226 mm)		
Weight	6 lbs (2.72 Kg), excluding consumables			
Options & Accessories	Cutter module Label Dispenser External label roll holder for 10" (250 mm) O.D. label rolls External label rewinder			

* Specifications are subject to change without notice. All company and/or product names are trademarks and/or registered trademarks of their respective owners.

** Minimum print height and maximum print speed specification compliance can be dependent on non-standard material variables such as label type, thickness, spacing, liner construction, etc. Godex is pleased to test non-standard materials for minimum print height and maximum print speed capability.